



PRICE INDEX OF WESTERN AUSTRALIAN PRODUCED HARDWOODS

EMBARGO: 11:30AM (CANBERRA TIME) THURS 18 JAN 2001

C O N T E N T S

| | <i>page</i> |
|--|-------------|
| Notes..... | 2 |
| Summary of findings | 4 |
| Price Indexes of Western Australian Produced Hardwoods | 7 |
| Explanatory Notes | 8 |

- For more information about these and related statistics, contact Bob Pearse on Perth 08 9360 5147 or the National Information Service on 1300 135 070.

NOTES

FORTHCOMING ISSUES

| <i>ISSUE</i> | <i>RELEASE DATE</i> |
|--------------|---------------------|
| March 2001 | 19 April 2001 |

ABOUT THIS PUBLICATION

This publication, prepared by the Australian Bureau of Statistics on behalf of the Western Australian Department of Conservation and Land Management and the Forest Industries Federation (WA) Inc, presents index numbers measuring changes in prices of Western Australian sawn hardwood timber.

The Price Index of Western Australian Produced Hardwoods (WAPHI) measures the change in prices of Western Australian sawn hardwoods. Individual price indexes are also published for each of the major hardwood timbers produced and sold by the Western Australian timber industry, namely:

- Green jarrah
- Green karri
- Dry jarrah

THE NEW TAX SYSTEM

Australian Bureau of Statistics (ABS) statistical series are being impacted to varying degrees as a result of The New Tax System (TNTS), introduced in Australia from 1 July 2000. TNTS included the removal of Wholesale Sales Tax and the introduction of a Goods and Services Tax (GST), and as a result, a wide range of ABS data series will reflect significant immediate and subsequent impacts. Please note the prices used in the compilation of the index numbers in this publication exclude GST.

SYMBOLS AND OTHER USAGES

| | |
|------|---|
| r | figure or series revised since previous issue |
| . . | not applicable |
| n.a. | not available |
| — | nil or rounded to zero |

Nev Cooney
Acting Regional Director, Western Australia

CONTENTS

Page

COMMENTARY

Summary of findings 4

TABLES

1 Price Indexes of Western Australian Produced Hardwoods 7

INFORMATION

Explanatory notes 8

SUMMARY OF FINDINGS

KEY FIGURES

PRICE INDEX NUMBERS

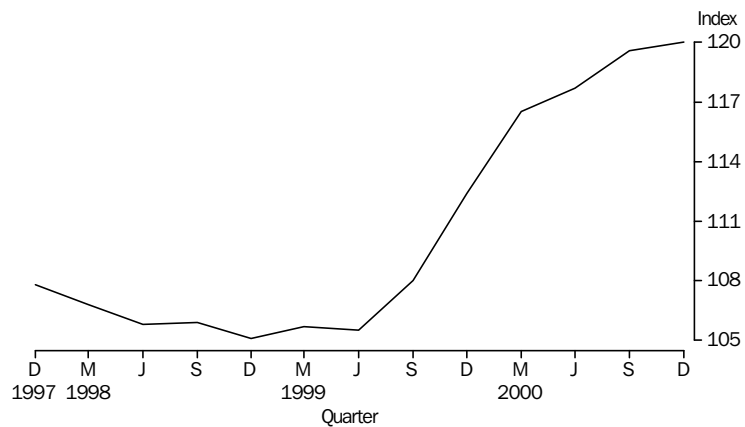
| | Sept qtr 00 | Dec qtr 00 | Sept qtr 00 to Dec qtr 00 |
|-----------------------|-----------------|-----------------|------------------------------|
| | Index number | Index number | % change |
| WA Produced Hardwoods | 119.6 | 120.0 | 0.3 |
| Green Jarrah | 114.8r | 115.4 | 0.5 |
| Green Karri | 110.5r | 110.4 | -0.1 |
| Dry Jarrah | 128.5r | 129.2 | 0.5 |

PRICE INDEXES

PRICE INDEX OF WESTERN AUSTRALIAN PRODUCED HARDWOODS

The Western Australian Produced Hardwoods Index (WAPHI) increased by 0.3% between the September quarter 2000 and December quarter 2000 and follows an increase of 1.6% for the previous quarter. For the year ending December quarter 2000, the index increased 6.8%.

Price index of WAPHI

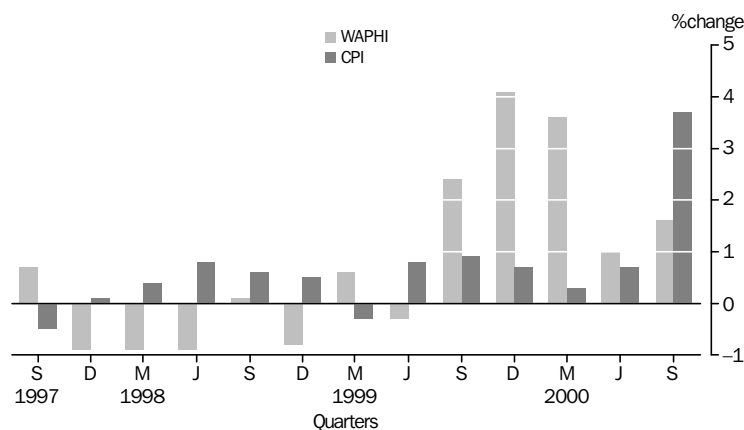


SUMMARY OF FINDINGS *continued*

The Consumer Price Index (CPI) is commonly used as a general indicator of inflation/deflation. The WAPHI, covering prices of selected timber items only, does not always display the same trends as the CPI. By way of example, the CPI for Perth, All Groups increased 3.7% for the September quarter 2000 while the WAPHI increased 1.6%. A major contributor to the different trends displayed this quarter was the treatment of The New Tax System in each of the indexes (eg in the WAPHI, prices used in compiling the index were exclusive of GST, whereas prices in the CPI included the GST).

The graph below shows a comparison between the quarterly percentage changes for the CPI All Groups for Perth and the WAPHI since June quarter 1997.

Comparison of WAPHI with CPI



PRICE INDEXES OF GREEN JARRAH AND GREEN KARRI

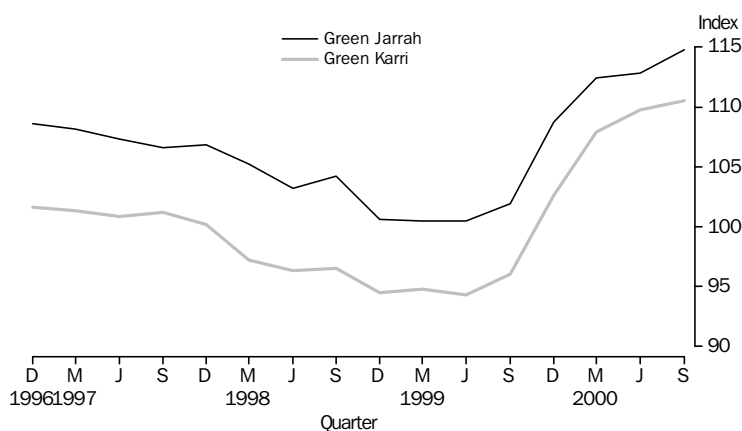
From the September quarter 2000 to the December quarter 2000, the index for green jarrah increased 0.5% and the index for green karri decreased by 0.1%. Over the twelve months ended December quarter 2000 the indexes for green jarrah and green karri have increased by 6.2% and 7.6% respectively. The index numbers for this quarter and the previous quarter show that the rate of price increases has slowed when compared with price movements in the first half of the year 2000. The timber roofing frames of residential buildings remains a major market for green hardwoods and this market has been declining. Another use of green hardwoods is for railway sleepers and crossing timber.

SUMMARY OF FINDINGS *continued*

Generally, suppliers revise the prices of jarrah and karri to the local market at the same time, usually applying a uniform percentage price change to the same size, length and stress grade of hardwood timber, irrespective of variety. Prices for interstate sales and exports of green jarrah and green karri, however, are sometimes independently determined and this can affect the price movements of the two species in the index.

Below is a graph comparing green jarrah and karri price movements.

Comparison of green jarrah and green karri price movements



PRICE INDEX OF DRY JARRAH

The index for dry jarrah increased by 0.5% between September quarter 2000 and December quarter 2000 following an increase of 2.1% the previous quarter. In the twelve months to December quarter 2000, prices have increased 6.9%.

PRICE INDEX OF DRY KARRI

Although an index of dry karri is compiled by the ABS and the price movements are included in the compilation of the Price Index of Western Australian Produced Hardwoods, because of the limited number of producers and the small volumes sold, the ABS does not release the index numbers.

1

PRICE INDEXES OF WESTERN AUSTRALIAN PRODUCED HARDWOODS

| <i>Period</i> | <i>Index number(a)</i> | <i>% change from corresponding quarter of previous year</i> | <i>% change from previous period</i> |
|-----------------------|------------------------|---|--------------------------------------|
| | | | |
| WA PRODUCED HARDWOODS | | | |
| 1997-98 | 107.3 | ... | -0.6 |
| 1998-99 | 105.6 | ... | -1.6 |
| 1999-00 | 110.6 | ... | 4.7 |
| 1999 | | | |
| September | 108.0 | 2.0 | 2.4 |
| December | 112.4 | 6.9 | 4.1 |
| 2000 | | | |
| March | 116.5 | 10.2 | 3.6 |
| June | 117.7 | 11.6 | 1.0 |
| September | 119.6 | 10.7 | 1.6 |
| December | 120.0 | 6.8 | 0.3 |
| | | | |
| GREEN JARRAH | | | |
| 1997-98 | 105.4 | ... | -2.2 |
| 1998-99 | 101.4 | ... | -3.8 |
| 1999-00 | 105.9 | ... | 4.4 |
| 1999 | | | |
| September | 101.9 | -2.2 | 1.4 |
| December | 108.7 | 8.1 | 6.7 |
| 2000 | | | |
| March | 112.4 | 11.8 | 3.4 |
| June | 112.8 | 12.2 | 0.4 |
| September | 114.8r | 12.7r | 1.8r |
| December | 115.4 | 6.2 | 0.5 |
| | | | |
| GREEN KARRI | | | |
| 1997-98 | 98.7 | ... | -2.9 |
| 1998-99 | 95.0 | ... | -3.7 |
| 1999-00 | 100.2 | ... | 5.5 |
| 1999 | | | |
| September | 96.0 | -0.5 | 1.8 |
| December | 102.6 | 8.6 | 6.9 |
| 2000 | | | |
| March | 107.9 | 13.8 | 5.2 |
| June | 109.7 | 16.3 | 1.7 |
| September | 110.5r | 15.1r | 0.7r |
| December | 110.4 | 7.6 | -0.1 |
| | | | |
| DRY JARRAH | | | |
| 1997-98 | 114.7 | ... | 1.5 |
| 1998-99 | 115.8 | ... | 1.0 |
| 1999-00 | 120.6 | ... | 4.1 |
| 1999 | | | |
| September | 120.5 | 5.7 | 3.3 |
| December | 120.9 | 4.6 | 0.3 |
| 2000 | | | |
| March | 124.6 | 6.7 | 3.1 |
| June | 125.9 | 8.0 | 1.0 |
| September | 128.5r | 6.6 | 2.1r |
| December | 129.2 | 6.9 | 0.5 |

(a) Base Index 1992-93 = 100.0

EXPLANATORY NOTES

INTRODUCTION

1 This publication presents index numbers measuring changes in prices for sawn timber produced from Western Australian produced hardwoods. They are calculated on the reference base 1992–93 = 100.0

SCOPE

2 The scope of the index is Western Australian produced sawn hardwood timber sold by Western Australian mills and merchants within Western Australia, interstate and overseas. Timber used for veneer, woodchips, particle board and posts and poles is not included.

ITEMS AND WEIGHTS

3 The indexes are fixed weight indexes. For the period prior to March quarter 1997, the items included in the index were selected and allocated value weights on the basis of sawn timber sold during 1992–93 to final users in Western Australia and merchants interstate and overseas. From March quarter 1997, the items included in the index and their value weights were based on sawn timber sold during 1995–96 valued at December 1996 prices.

4 Many of the selected items carry not only the weight of directly priced timbers, but also the weight of other timbers whose prices are considered to move similarly to those of the directly priced timbers.

COMPOSITION AND WEIGHTING IN REFERENCE YEAR 1995–96

.....

| <i>Item</i> | <i>Contribution</i> |
|--------------|---------------------|
| | <i>%</i> |
| | |
| Green jarrah | 27 |
| Green karri | 27 |
| Dry jarrah | 44 |
| Dry karri | 2 |
| Total | 100 |

.....

PRICE MEASUREMENT

5 Most prices used in these indexes related to the mid-point of each month of the quarter up until the June quarter 1997. From the September quarter 1997 prices relate to the mid-point of the quarter. Prices are obtained from a representative sample of sawmills and timber merchants (including exporters). The point of pricing is the last sale before final use; handling and delivery costs are included for local sales, if incorporated in the merchant's or sawmill's price. For example, the price of timber sold to builders is the delivered on site price. Interstate sales are normally priced ex-mill and for exports, the price is generally free on board (fob).

6 As far as possible, actual transaction prices are used in the indexes and exclude the GST introduced in Australia from 1 July 2000. These are the prices *actually* received by sawmills and merchants from builders, joinery workshops, furniture manufacturers and other purchasers of the timber. The actual price paid can be described in various ways. For example, a price for a sawmill's or merchant's product may be described in terms of the components that make up the price, such as 'list price less (particular types of) discount'. It is these *net* prices that buyers pay to sellers that the ABS aims to use in compiling these price indexes.

EXPLANATORY NOTES *continued*

7 Price series relate to goods of fixed specifications with the aim of incorporating in the index, price changes for representative articles of constant quality (eg. size, dimensions, stress grade). Consistent with this approach, prices in general relate to a standard representative set of transactions (in terms of quantity, delivery arrangements, destination, etc.) in order to avoid variations in price that are attributable solely to a changing mix of transactions over time.

INDEX NUMBERS

8 The index numbers for financial years are simple averages of the relevant quarterly index numbers.

REVISIONS

9 Index numbers for the current quarter and the previous quarter are preliminary and subject to revision. From time to time, index numbers for earlier periods may also be revised. This will occur whenever the ABS obtains more complete information or discovers that incorrect prices have been used.

ANALYSIS OF INDEX CHANGE

10 Care should be exercised when interpreting quarter-to-quarter movements in the indexes as short term movements do not necessarily indicate changes in trend.

11 Movements in indexes from one period to another can be expressed either as changes in 'index points' or as percentage changes. The following example illustrates the method of calculating index points changes and percentage changes between any two periods.

DRY
JARRAH

| | |
|---|--------------|
| December quarter 2000 | 129.2 |
| <i>minus</i> September quarter 2000 | <u>128.5</u> |
| <i>equals</i> Change in index points | 0.7 |

| | |
|--|------------------|
| Change in index points x 100 | <u>0.7 x 100</u> |
| <i>divided by</i> September quarter 2000 | 128.5 |
| <i>equals</i> Percentage change | 0.5 |

RELATED PUBLICATIONS

12 Users may also wish to refer to the following publications which are available from ABS Bookshops.

- Consumer Price Index, Eight Capital Cities (6401.0)
- House Price Index (6416.0)
- Building Approvals, Western Australia (8731.5)
- Building Activity, Western Australia (8752.5)

13 Current publications produced by the ABS are listed in the *Catalogue of Publications and Products* (1101.0). The ABS also issues, twice weekly, a *Release Advice* (1105.0) which lists publications to be released in the next few days. The catalogue and release advice are available from ABS offices.

UNPUBLISHED STATISTICS

14 As well as the statistics included in this and related publications, the ABS may have other relevant unpublished data available. Inquiries should be made to (08) 9360 5147 or to any ABS office.

FOR MORE INFORMATION...

- INTERNET* **www.abs.gov.au** the ABS web site is the best place to start for access to summary data from our latest publications, information about the ABS, advice about upcoming releases, our catalogue, and Australia Now—a statistical profile.
- LIBRARY* A range of ABS publications is available from public and tertiary libraries Australia-wide. Contact your nearest library to determine whether it has the ABS statistics you require, or visit our web site for a list of libraries.
- CPI INFOLINE* For current and historical Consumer Price Index data, call 1902 981 074 (call cost 77c per minute).
- DIAL-A-STATISTIC* For the latest figures for National Accounts, Balance of Payments, Labour Force, Average Weekly Earnings, Estimated Resident Population and the Consumer Price Index call 1900 986 400 (call cost 77c per minute).

INFORMATION SERVICE

Data which have been published and can be provided within five minutes are free of charge. Our information consultants can also help you to access the full range of ABS information—ABS user-pays services can be tailored to your needs, time frame and budget. Publications may be purchased. Specialists are on hand to help you with analytical or methodological advice.

- PHONE* **1300 135 070**
- EMAIL* **client.services@abs.gov.au**
- FAX* 1300 135 211
- POST* Client Services, ABS, GPO Box 796, Sydney 1041

WHY NOT SUBSCRIBE?

ABS subscription services provide regular, convenient and prompt deliveries of ABS publications and products as they are released. Email delivery of monthly and quarterly publications is available.

- PHONE* 1300 366 323
- EMAIL* subscriptions@abs.gov.au
- FAX* 03 9615 7848
- POST* Subscription Services, ABS, GPO Box 2796Y, Melbourne 3001



2641050012001
ISSN 1323-0360

RRP \$17.00

© Commonwealth of Australia 2001